

| REV. | DESCRIPTION | DATE | BY |
|------|-------------|------|----|
| | | | |

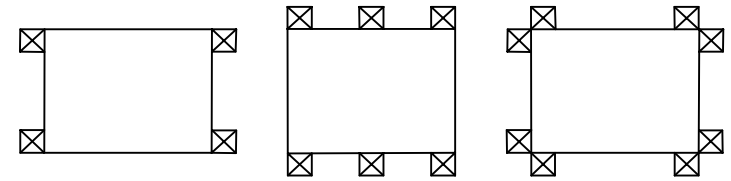
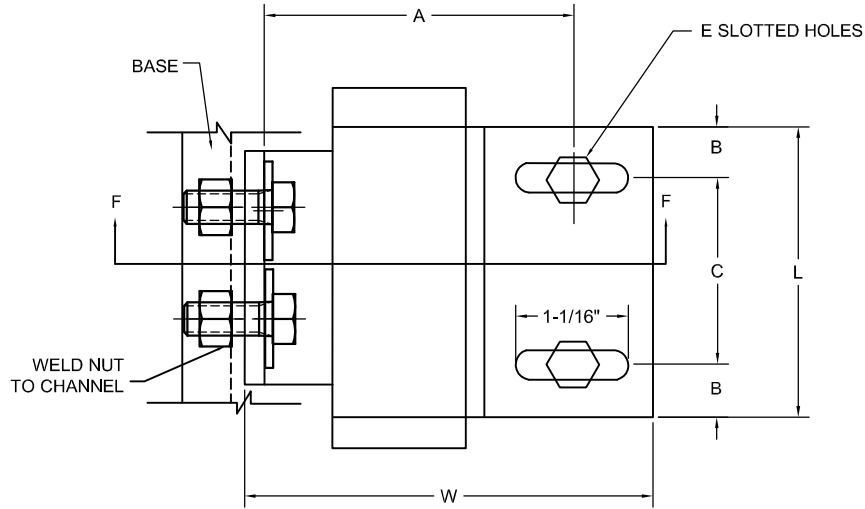
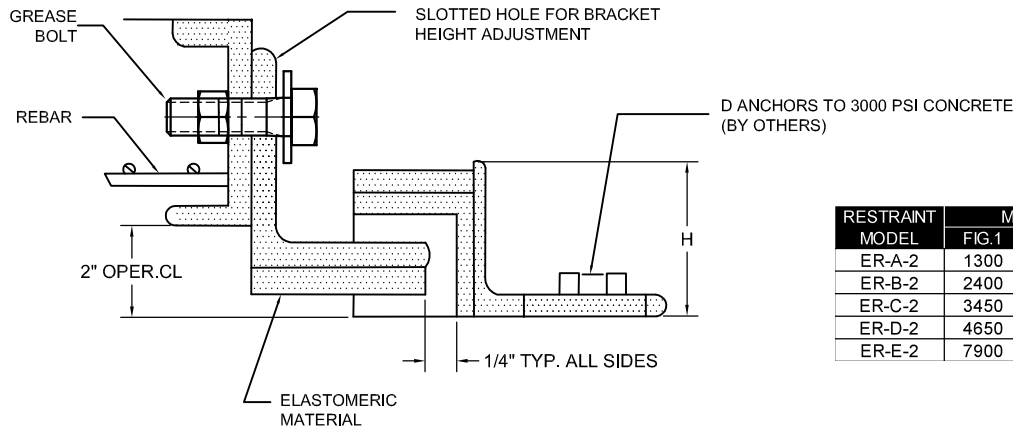


FIGURE 1 (4 RESTRAINTS) FIGURE 2 (6 RESTRAINTS) FIGURE 3 (8 RESTRAINTS)
 RESTRAINT LAYOUT- CONCRETE INERTIA BASES (PLAN VIEW)



SECTION FF

NOTES:

- 1) LOAD RATINGS ARE MAXIMUM ALLOWABLES BASED ON 1.00 G ACCELERATION.
- 2) ANCHORS TO CONCRETE MUST BE ITW RAMSET/RED HEAD OR EQUIVALENT.
- 3) CONTRACTOR TO FIELD WELD CONCRETE ANCHORS TO BODY OF RESTRAINT AND ANGLE CLIP TO BASE AFTER EQUIPMENT IS IN FINAL OPERATING POSITION.
- 4) MAXIMUM LOAD IS TOTAL OF EQUIPMENT AND BASE WEIGHT.

| RESTRAINT MODEL | MAX LOAD (LB) | | | DIMENSIONS (IN) | | | | | | | |
|-----------------|---------------|-------|-------|-----------------|-----|-------|-----|-------|-------|----|-------|
| | FIG.1 | FIG.2 | FIG.3 | A | B | C | D | E | H | L | W |
| ER-A-2 | 1300 | 1975 | 2625 | 3-3/4 | 3/4 | 2-1/2 | 3/8 | 7/16 | 1-1/2 | 4 | 4-1/2 |
| ER-B-2 | 2400 | 3625 | 5575 | 4 | 3/4 | 3-1/2 | 3/8 | 7/16 | 1-5/8 | 5 | 5-1/2 |
| ER-C-2 | 3450 | 5175 | 7975 | 4 | 1 | 5 | 3/8 | 7/16 | 1-5/8 | 7 | 5-1/2 |
| ER-D-2 | 4650 | 7000 | 10650 | 6 | 1 | 6 | 1/2 | 9/16 | 2 | 8 | 7-1/2 |
| ER-E-2 | 7900 | 11850 | 15800 | 6 | 1 | 9 | 5/8 | 11/16 | 2 | 11 | 7-1/2 |

CERTIFIED FOR:

JOB NAME: _____
 CUSTOMER : _____
 CUSTOMER P.O.: _____
 SALES ORDER: _____

**MODEL ER-2 1300-15800 LBS.
 SNUBBED SEISMIC RESTRAINTS FOR
 CONCRETE POURING FORMS**



THE VMC GROUP
 The Power of Together
 Bloomingdale, NJ 07403
 Houston, TX 77041

SCALE :

NONE

SHEET:



DRAWING NO.:

REVISION